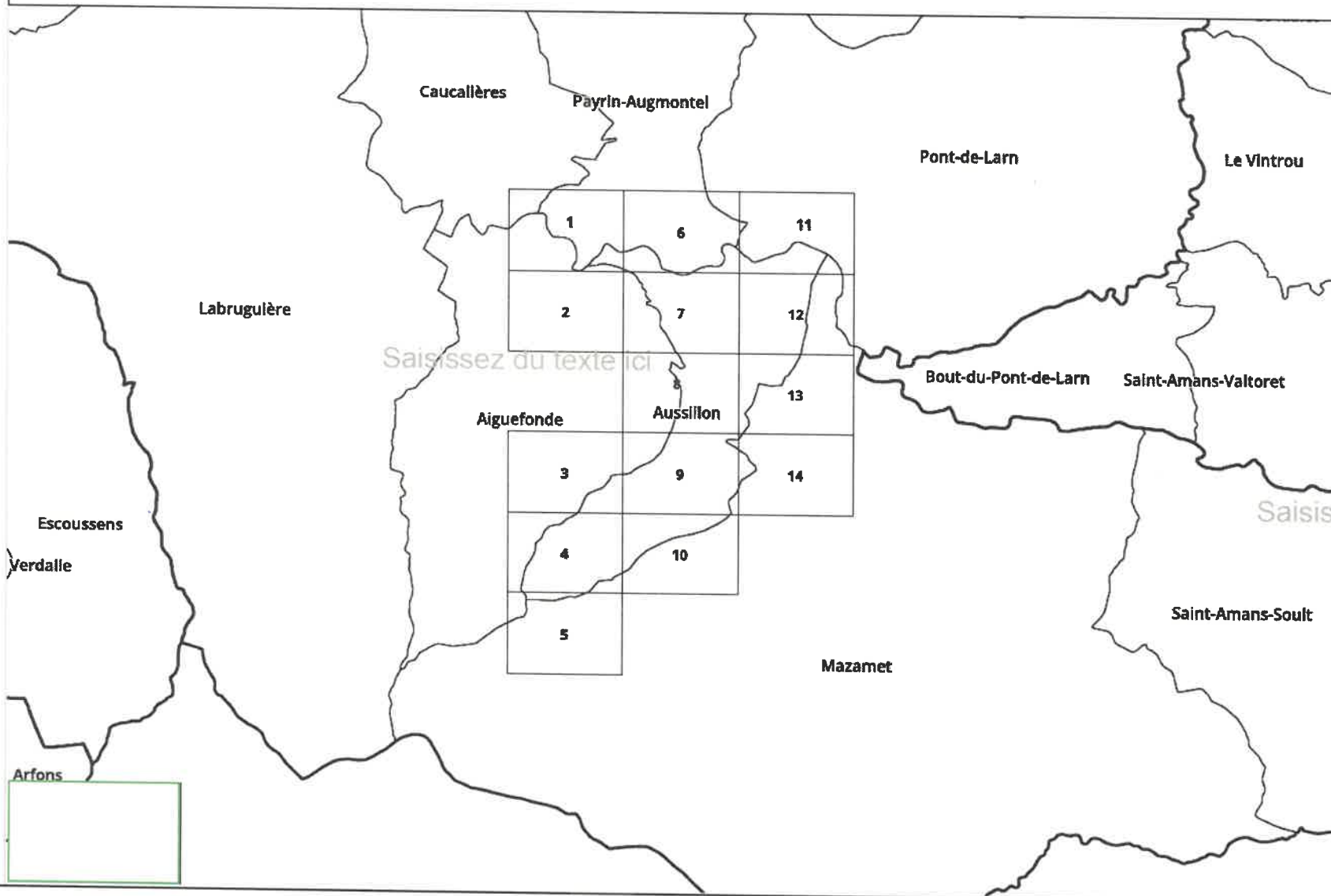


# AUSSILLON (81021) : carroyage





# Définition des Zones d'Accélération des Energies Renouvelables

Les zones identifiées pour Aussillon :

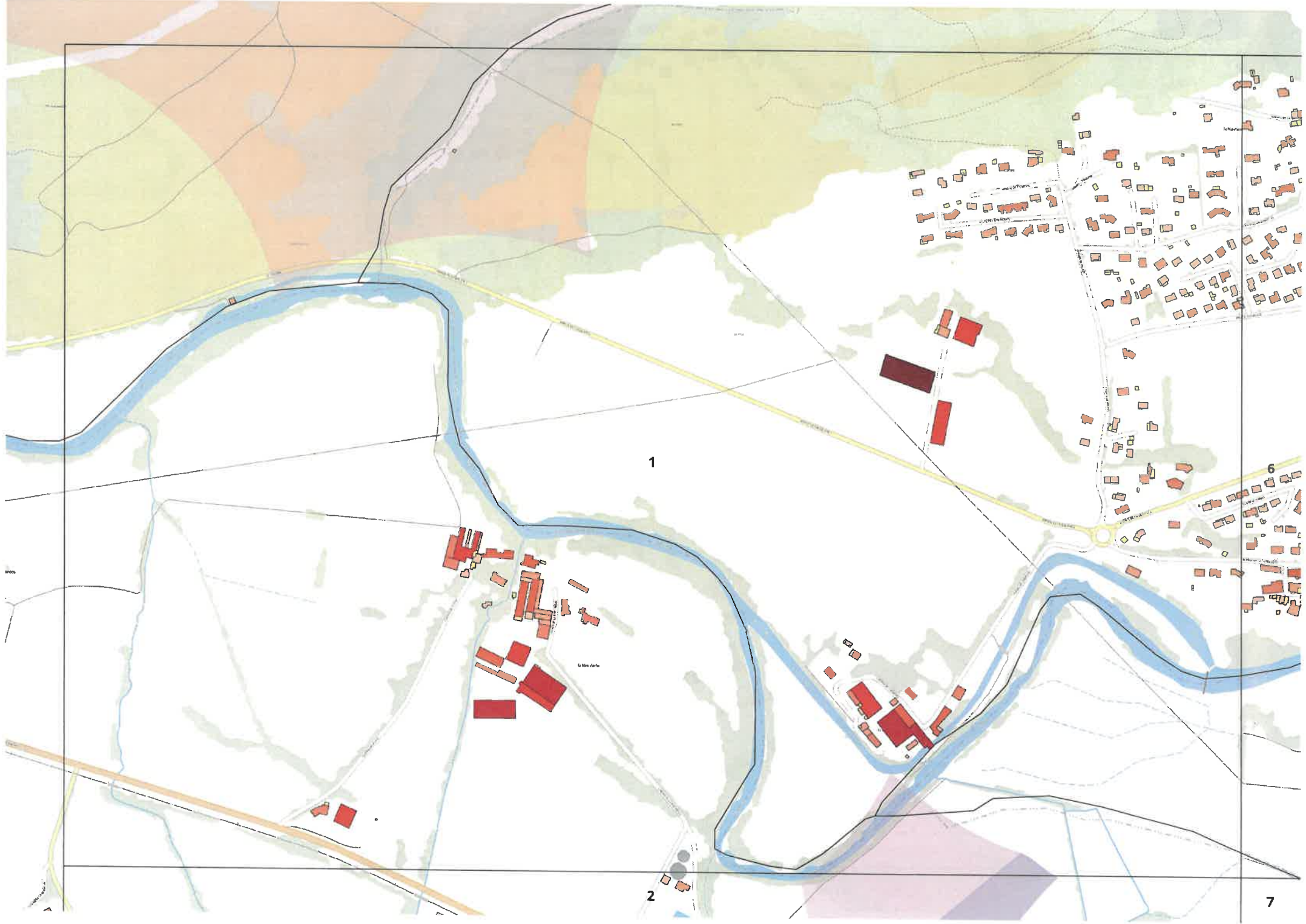
Panneaux photovoltaïques sur toiture : ensemble de la commune (traits bleu sur la carte)

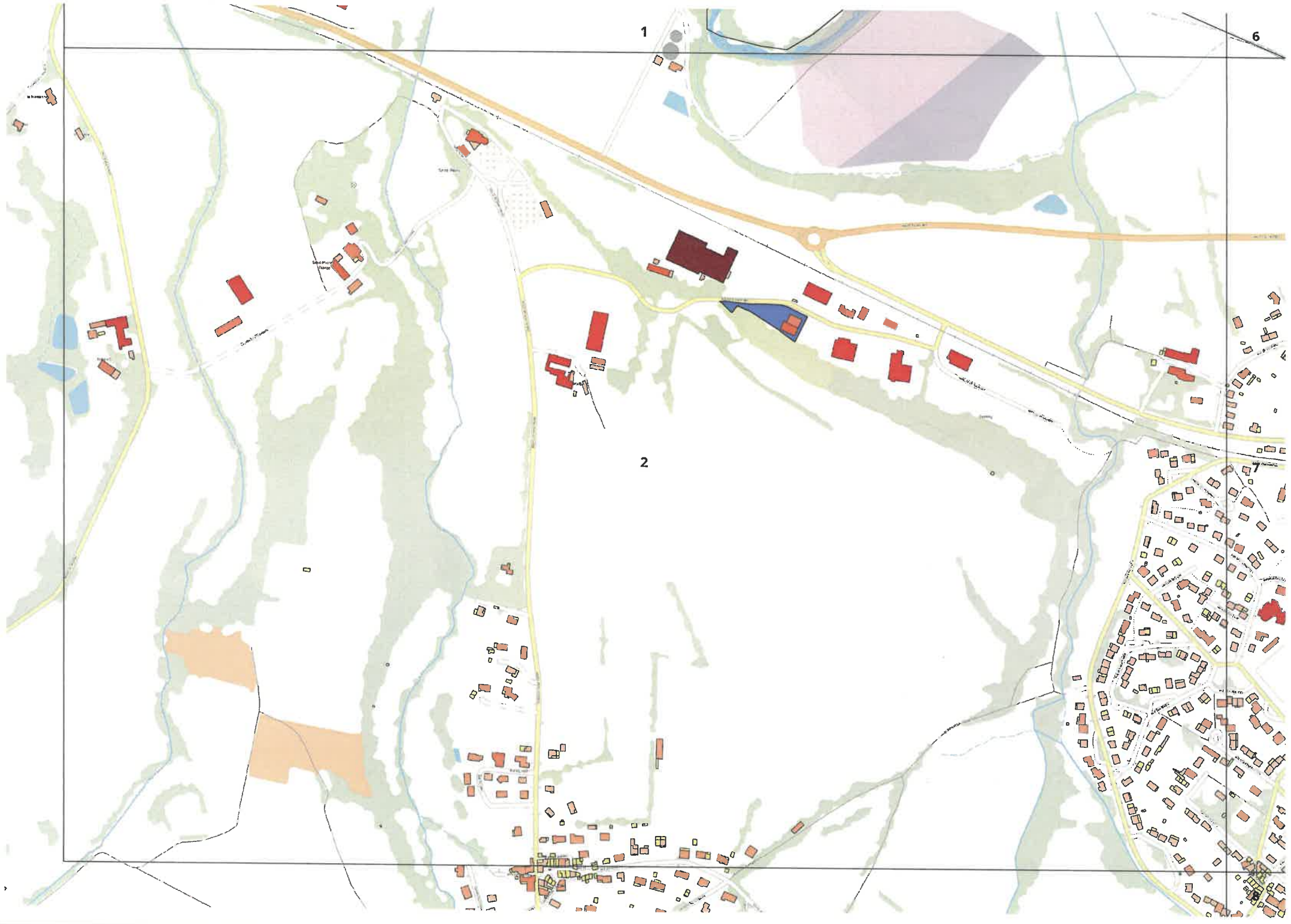
Panneaux au sol : Ancienne décharge uniquement (rectangle mauve sur la carte)

Ombrières : Parkings ZA, ZI, Centres commerciaux et USLD (traits rouge sur la carte)

Hydroélectricité : Ruisseau d'Aussillon et rivière du Thoré uniquement à partir de seuils existants (traits vert sur la carte)







1

6

2



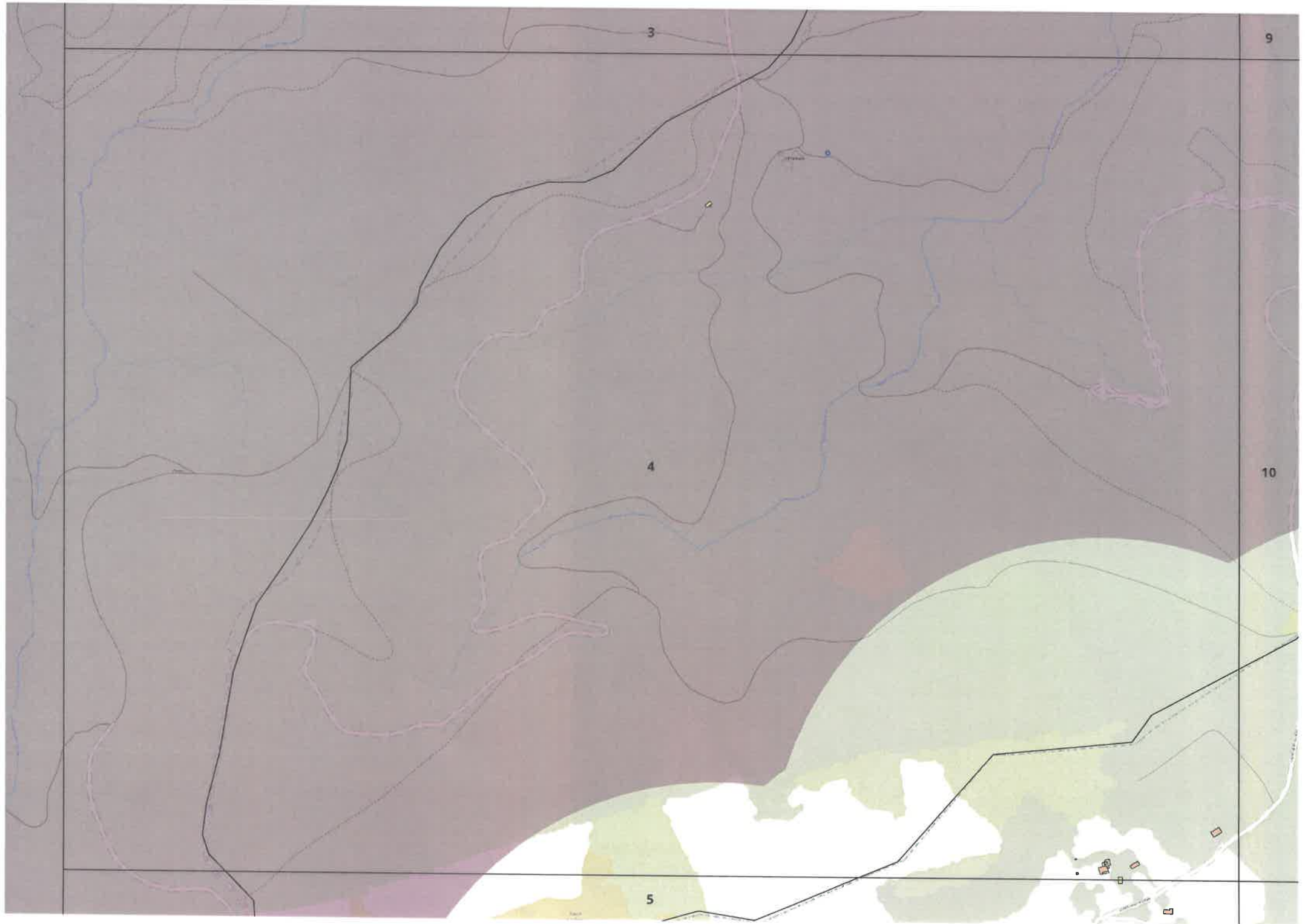


3

9

4

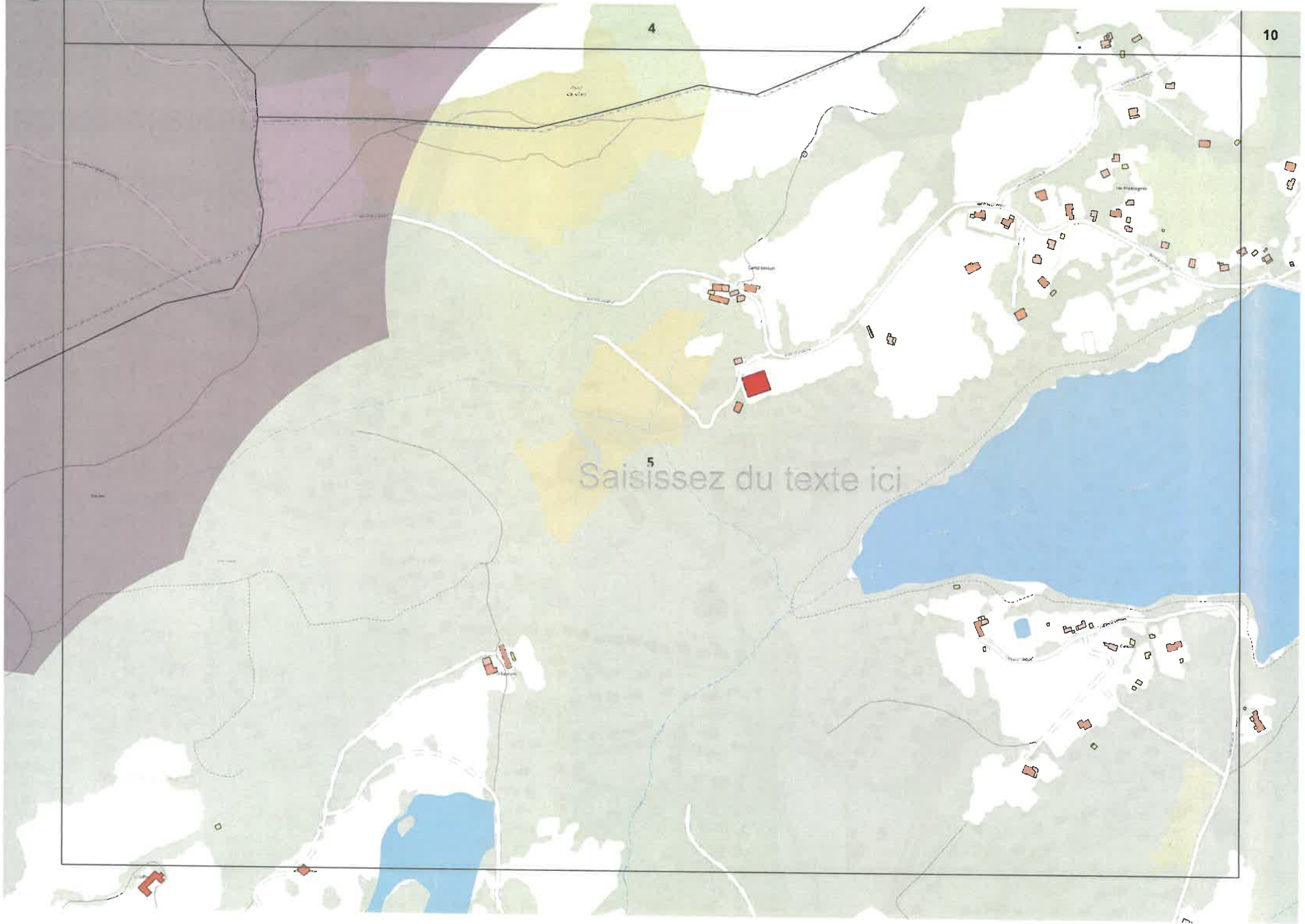
10



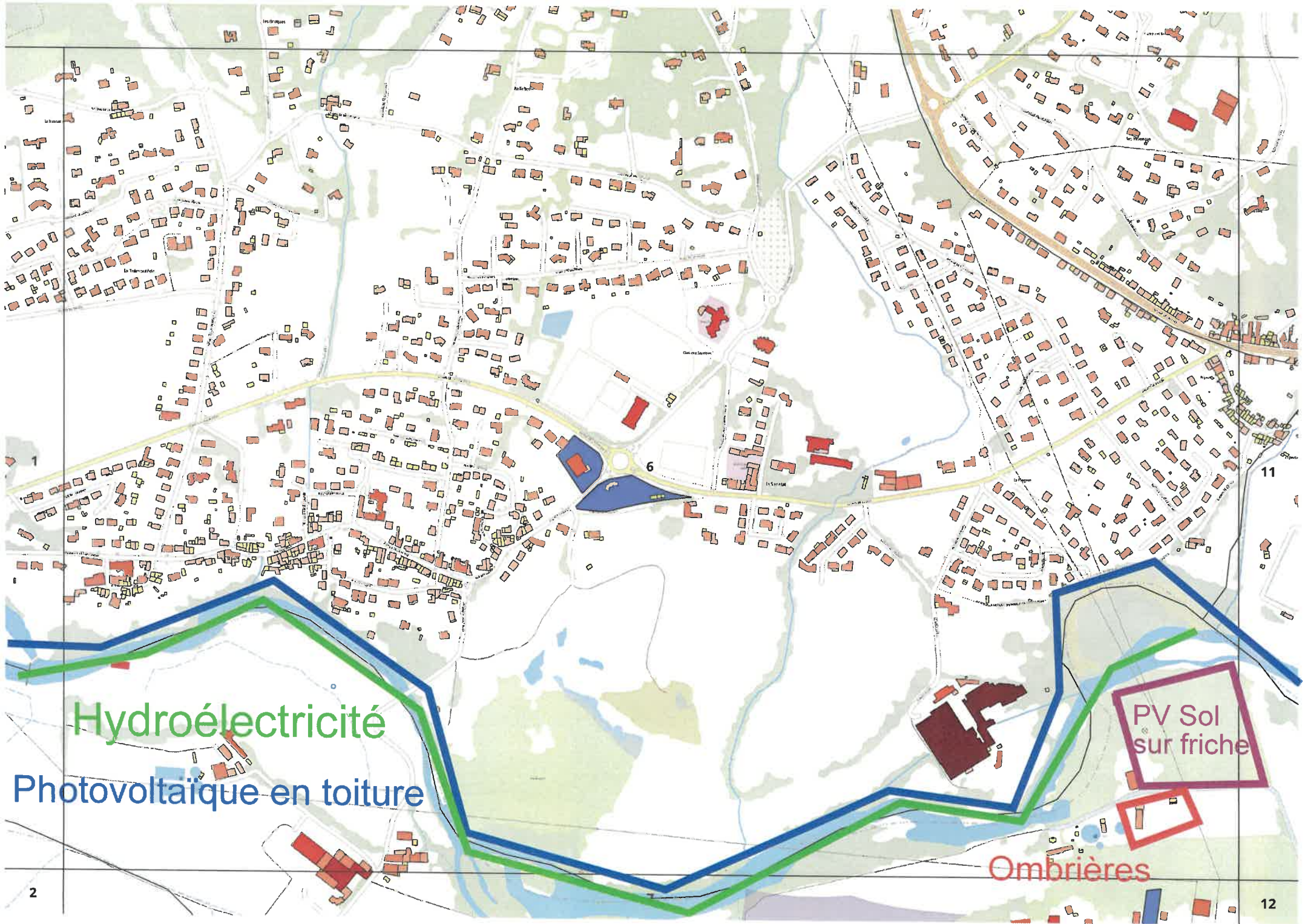


4

5  
Saisissez du texte ici







Hydroélectricité

Photovoltaïque en toiture

PV Sol sur friche

Ombrières



1 6 11

Photovoltaïque en toiture

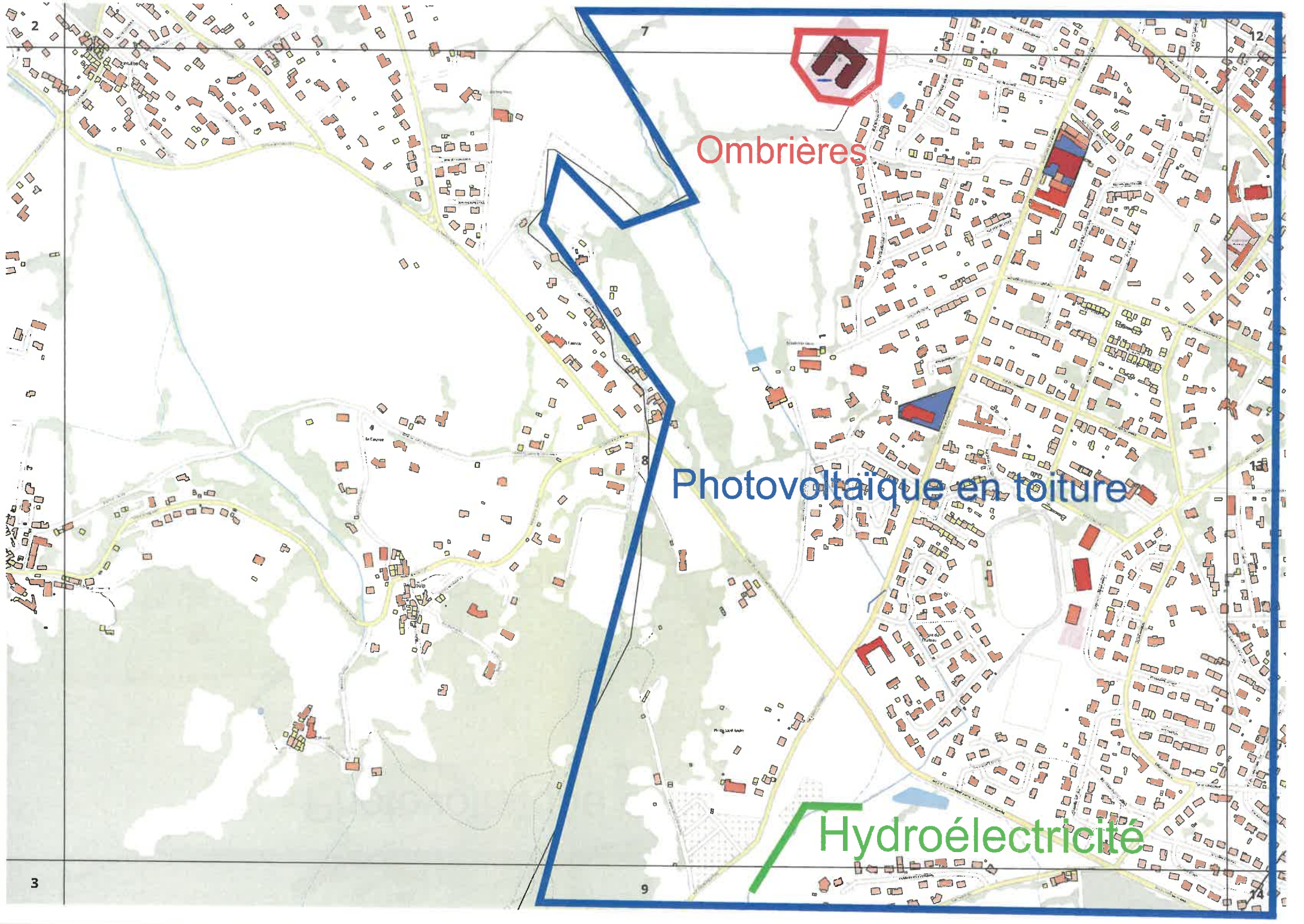
The map shows a residential area with various buildings and streets. A blue line outlines the entire area shown. A red line outlines a specific cluster of buildings in the upper right. Blue shading is applied to the roofs of several buildings within this red-outlined area. The text 'Photovoltaïque en toiture' is written in blue above the red-outlined area. The word 'Ombrières' is written in red twice, once in the center and once in the lower right, indicating shaded areas. A grid with numbers 1, 6, 11, and 8 is visible.

Ombrières

Ombrières

8





Ombrières

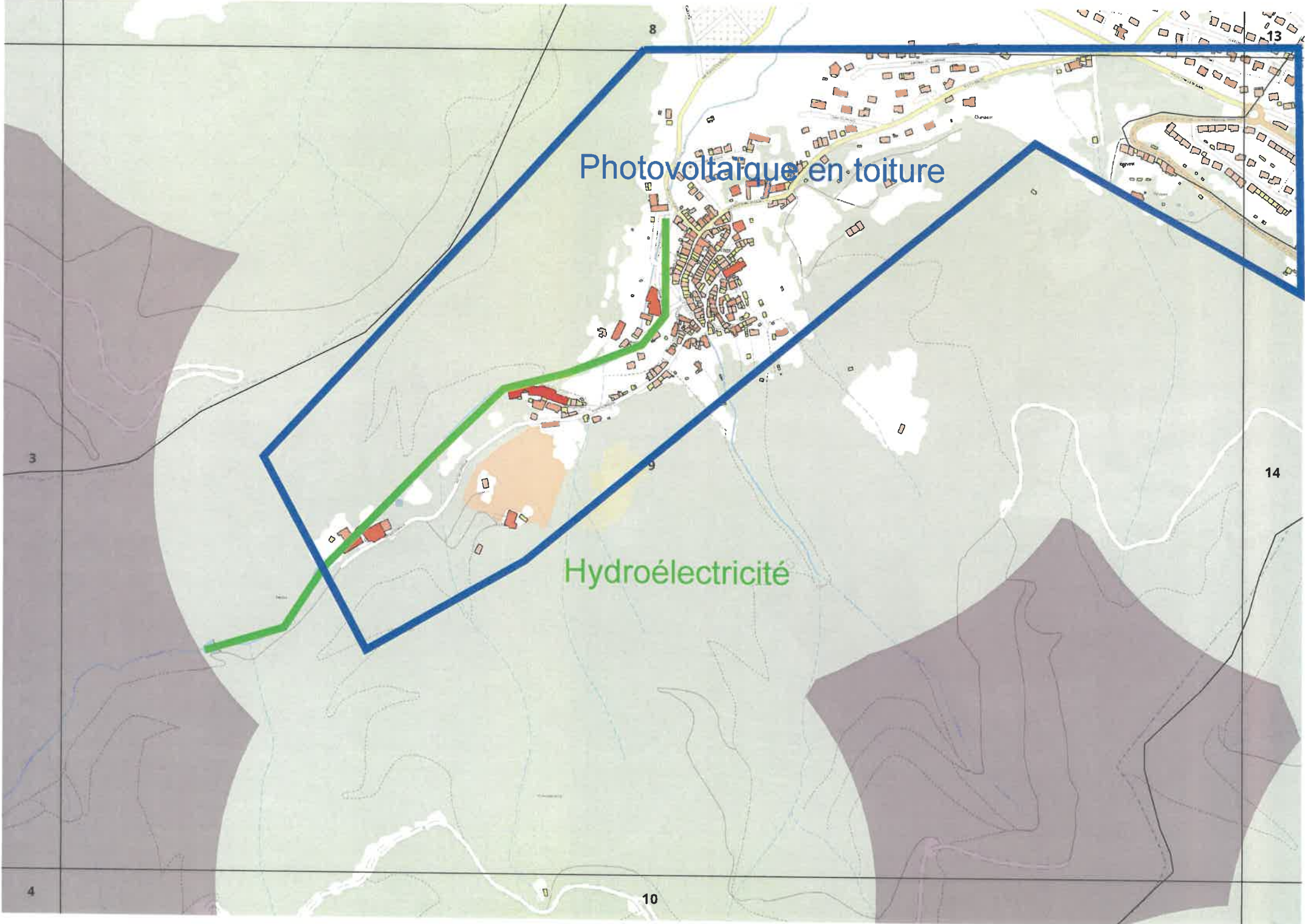
Photovoltaïque en toiture

Hydroélectricité



Photovoltaïque en toiture

Hydroélectricité





3

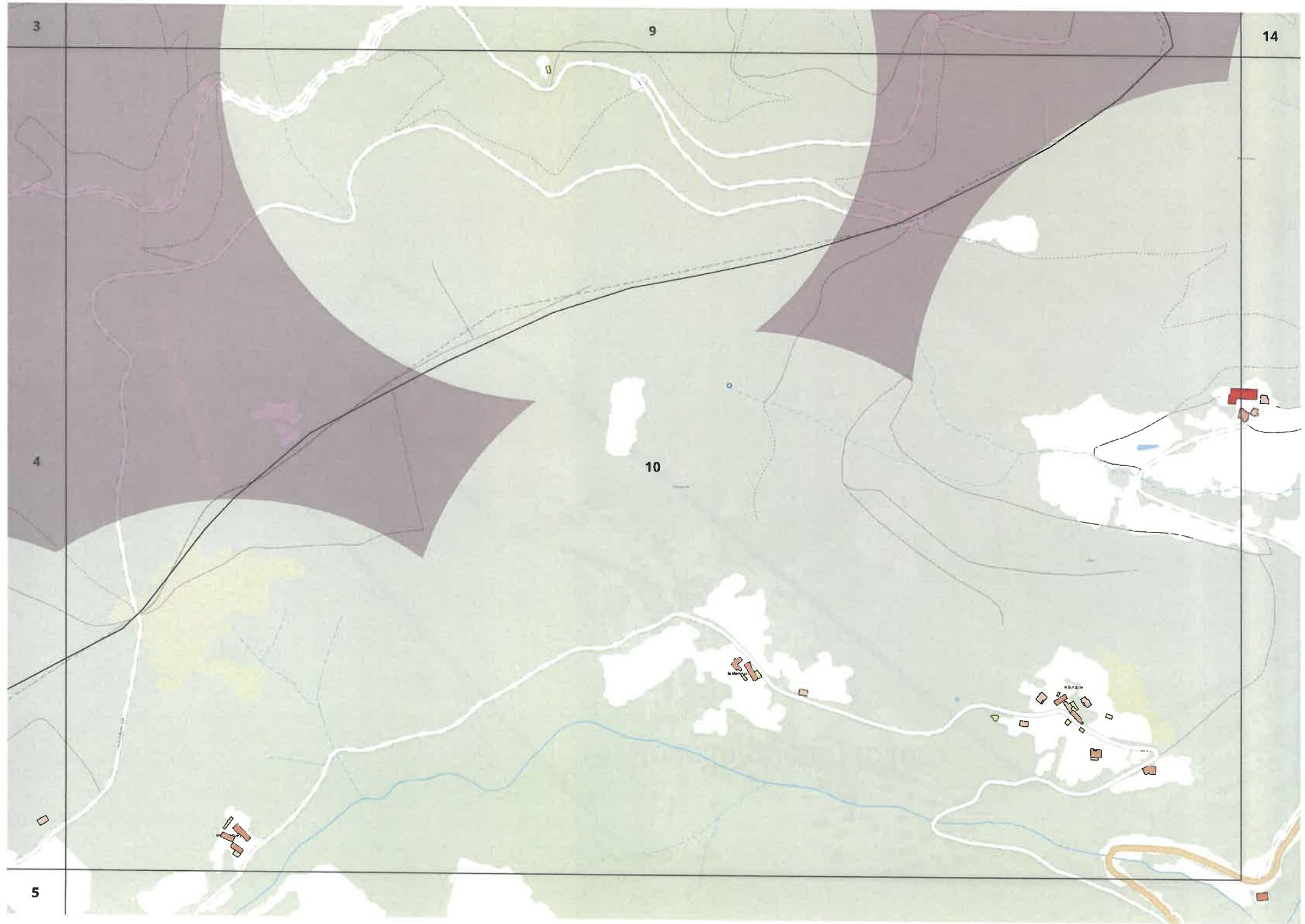
9

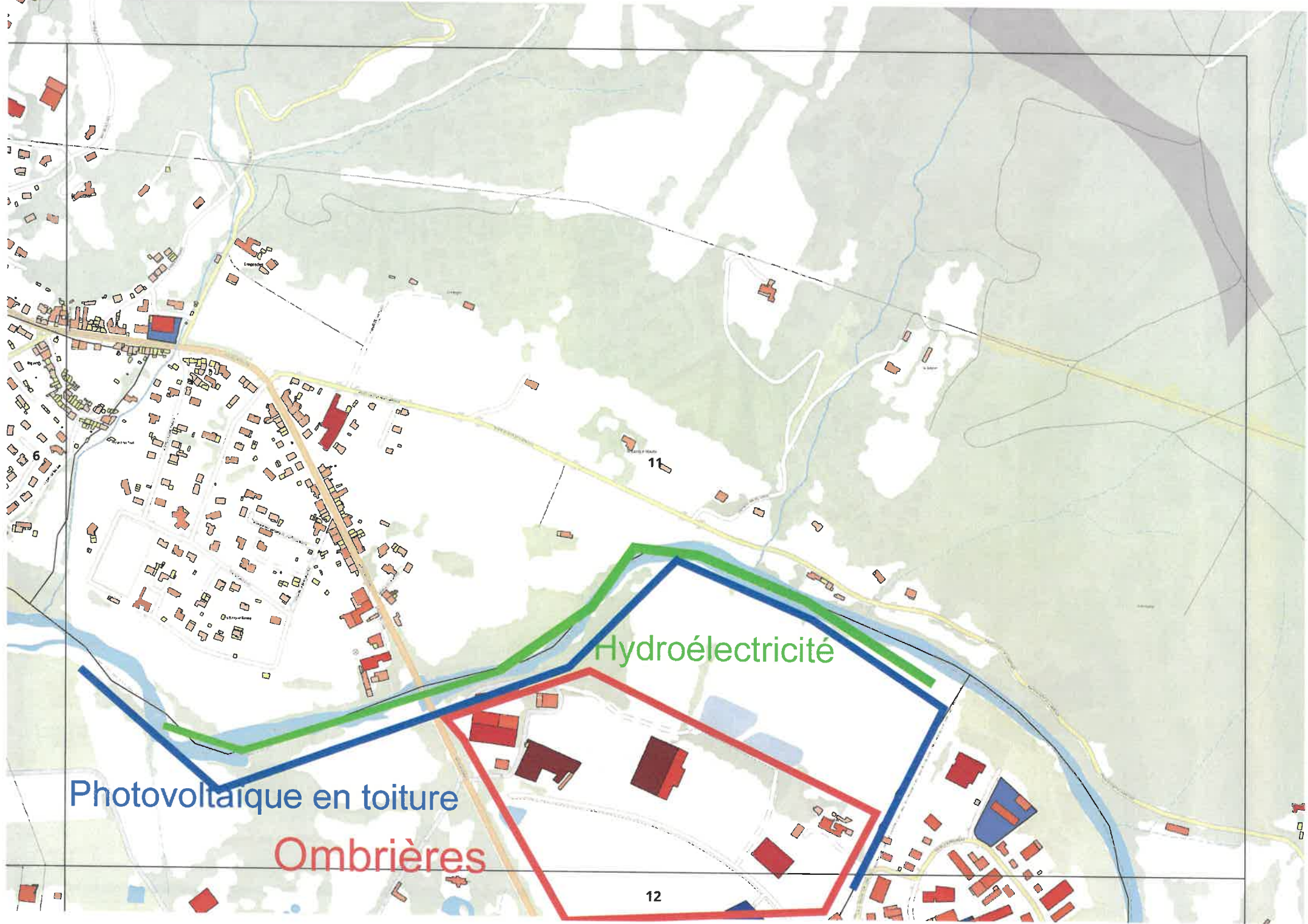
14

4

10

5





Hydroélectricité

Photovoltaïque en toiture

Ombrières

11

12





Ombrières

The map shows a residential area with various buildings. A large red outline encompasses a significant portion of the upper and middle sections of the map. A blue outline follows a path through the lower and right sections. Buildings within these outlines are shaded in blue, while others are in red. A river is visible on the right side of the map.

12

Photovoltaïque en toiture



Photovoltaïque en toiture

Ombrières

